

LEADTEK WinFast Navigator for WinCE

User's Manual

(GPS Monitor for WinCE version)

Contents

1. INTRODUCTION.....	1
2. INSTALLING WINFAST NAVIGATOR FOR POCKET PC	1
3. OPERATION OF WINFAST NAVIGATOR FOR PDA WITH WINCE	5

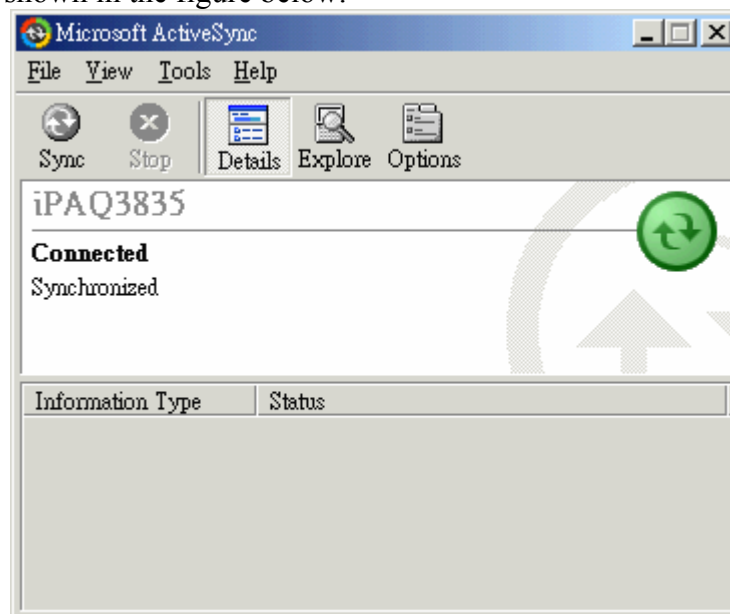
1. Introduction

The Leadtek WinFast Navigator is the software of GPS. It is used to test and observe your GPS receiver especially all Leadtek's GPS products. This software has easy installing and operating features. Therefore, the user can be easily to use the software under Windows CE based on Pocket PC operation system.

2. Installing WinFast Navigator for Pocket PC

Note :

Microsoft ActiveSync has to be installed on your computer when you install WinFast Navigator . The application interface is shown in the figure below.



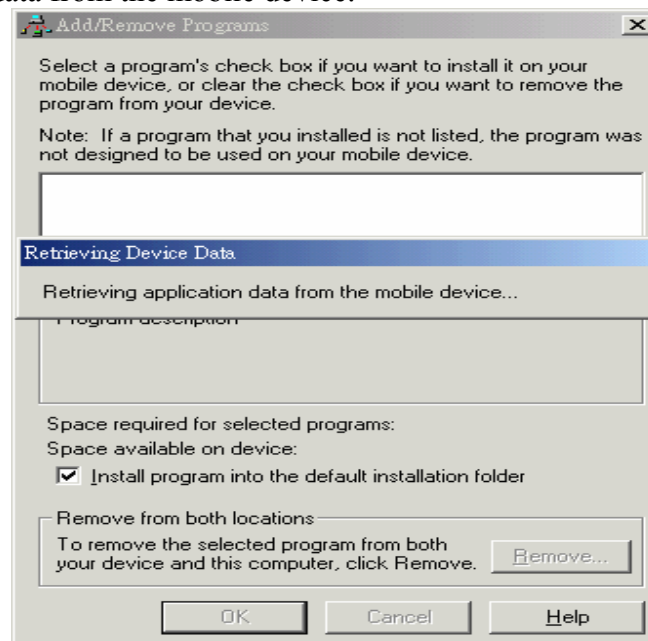
Step 1.

Insert the software CD in your CD-ROM drive. The setup window appears as shown in the figure to the next page. If the setup window does not appear automatically, run install.exe on the CD. Click WinFast Navigator CE to initialize the installation. You can also download this software through our website, www.leadtek.com.tw .



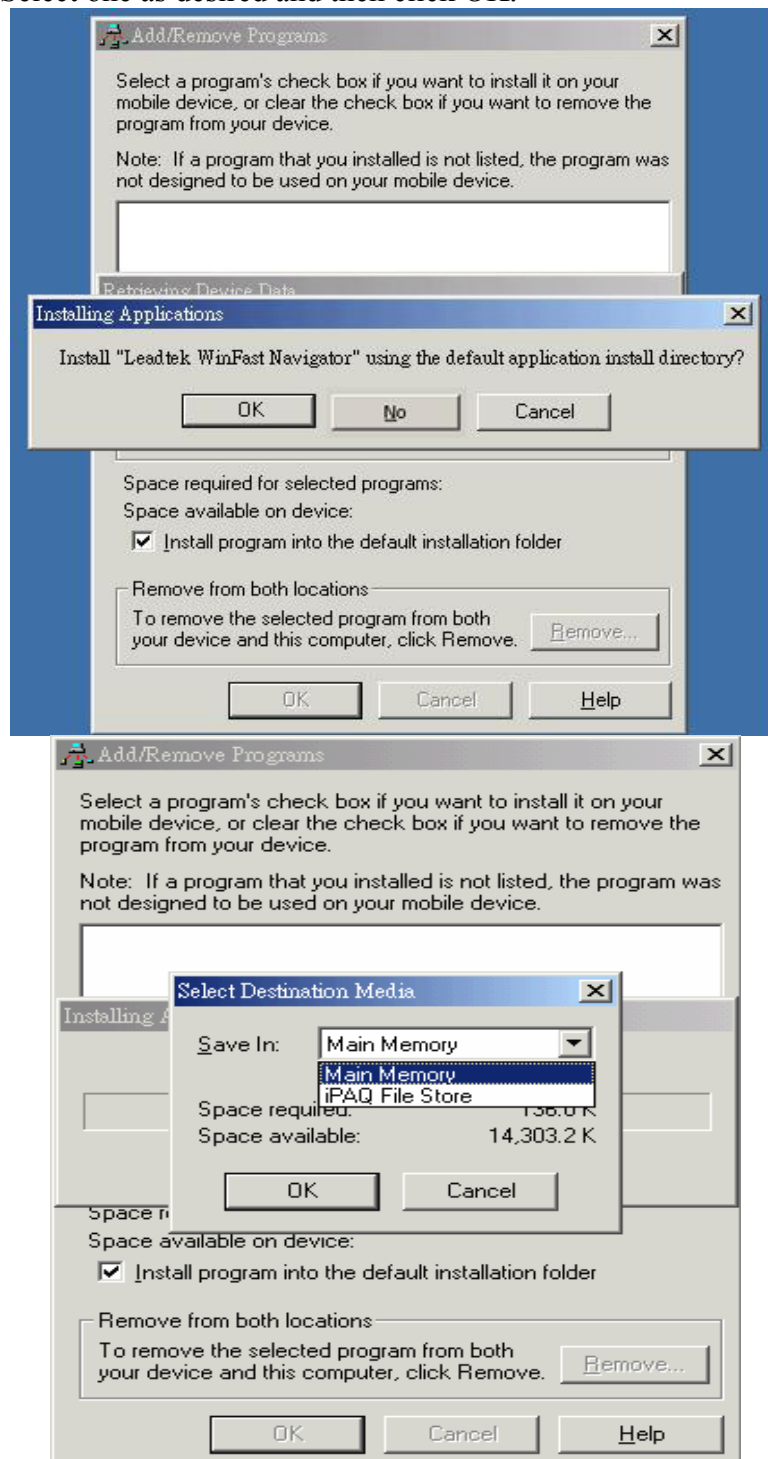
Step 2.

The Add/Remove Programs dialog box appears. An information box on top of it tells you the application is Retrieving application data from the mobile device.



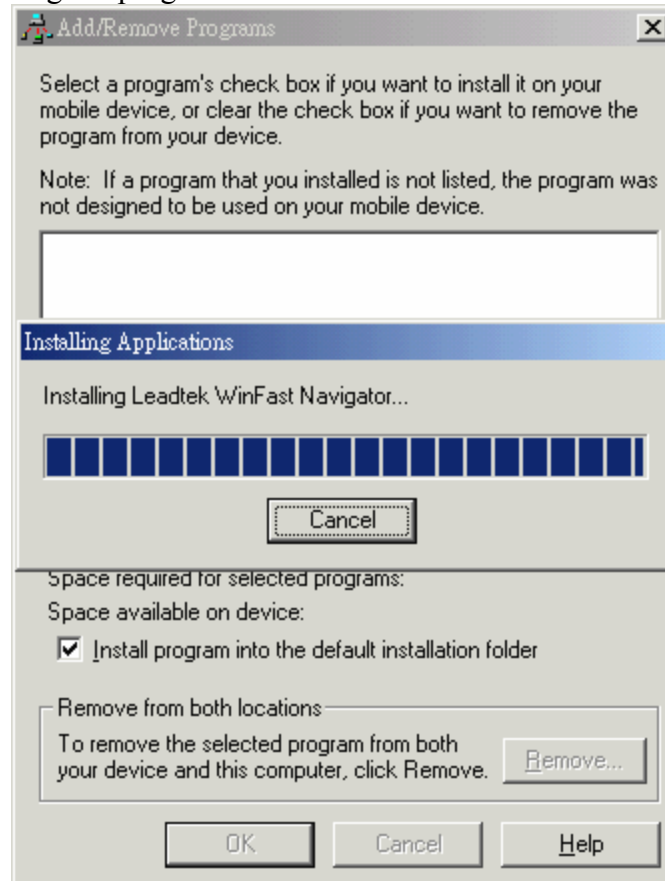
Step 3.

The application will next determine the destination location. A dialog box appears asking if you want to install the application at the default location, which is Main Memory on your PDA/Pocket PC. Click Yes to install WinFast Navigator at that location. Click No to change the location using the next dialog box (see the second figure) which contains a selection box with 2 destination options: Main Memory and iPAQ File Store. Select one as desired and then click OK.



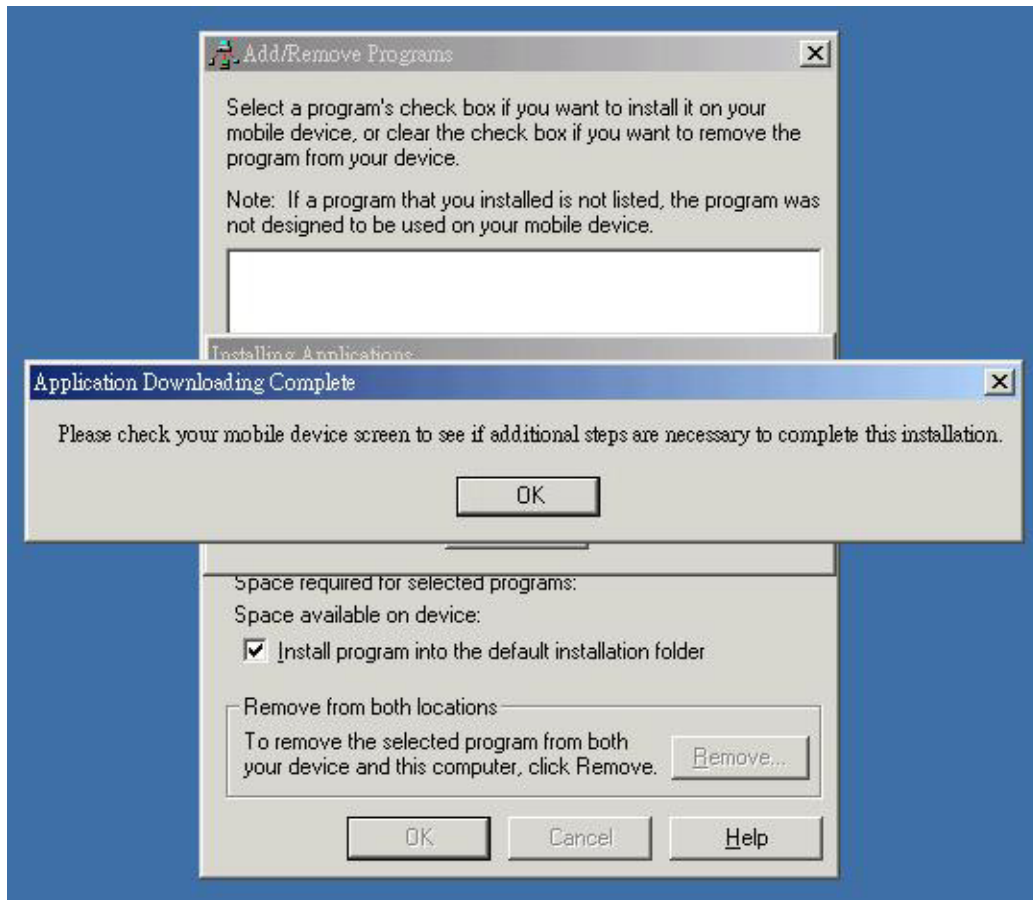
Step 4.

A dialog box appears showing the progress of installation.



Step 5.

When the installation is completed, a dialog box tells you to check your mobile device screen to see if additional steps are necessary to complete this installation. Click OK.



3. Operation of WinFast Navigator for PDA with WinCE

The WinFast Navigator allows you to control the function of the module using an easy-to-use application.

Application Main Window

When you run the application, the main window appears as shown in the figure below:

The main screen includes three major parts:

1. Menu bar

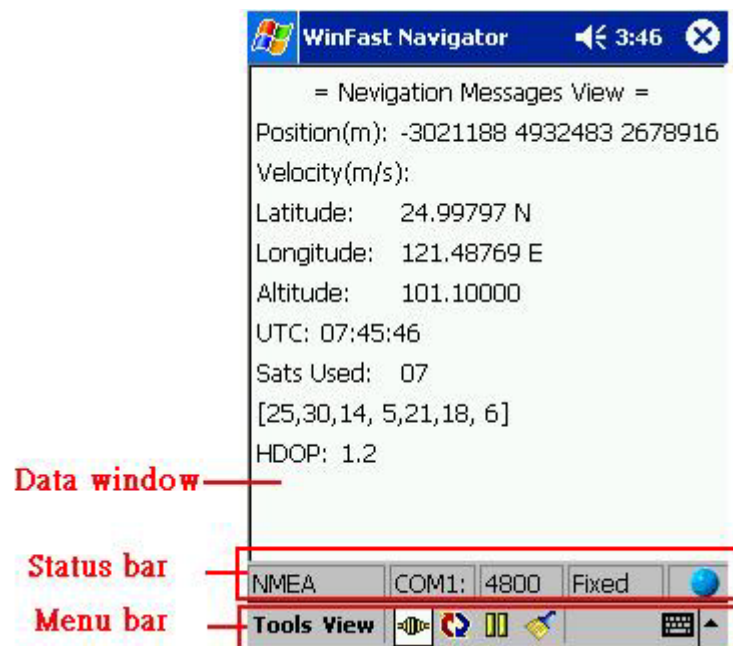
Provide accesses to all information and setting options.

2. Status bar

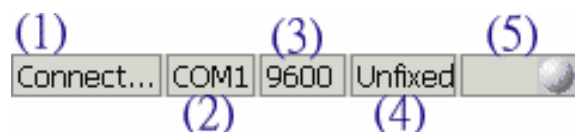
Show the current status, including the connection with the GPS, and the satellite data being received.

3. Data window

Show the contents of each view.



Reading Status Bar



Box (1)

Shows the current status of connection with the GPS in one of four possible messages:

◆ Disconnect:

The GPS is not connected.

◆ Connect...:

Displayed when Protocol Parser fails. The reason may be that the COM port has not been correctly set up.

◆ NMEA:

The data being received is in NMEA protocol.

◆ SiRF:

The data being received is in SiRF Protocol.

Box (2)

Indicates the COM port currently used.

Box (3)


Shows the Baud Rate of the current COM port.

Box (4)

Indicates whether the satellites are in their positions by showing Fixed or Unfixed.

Box (5)

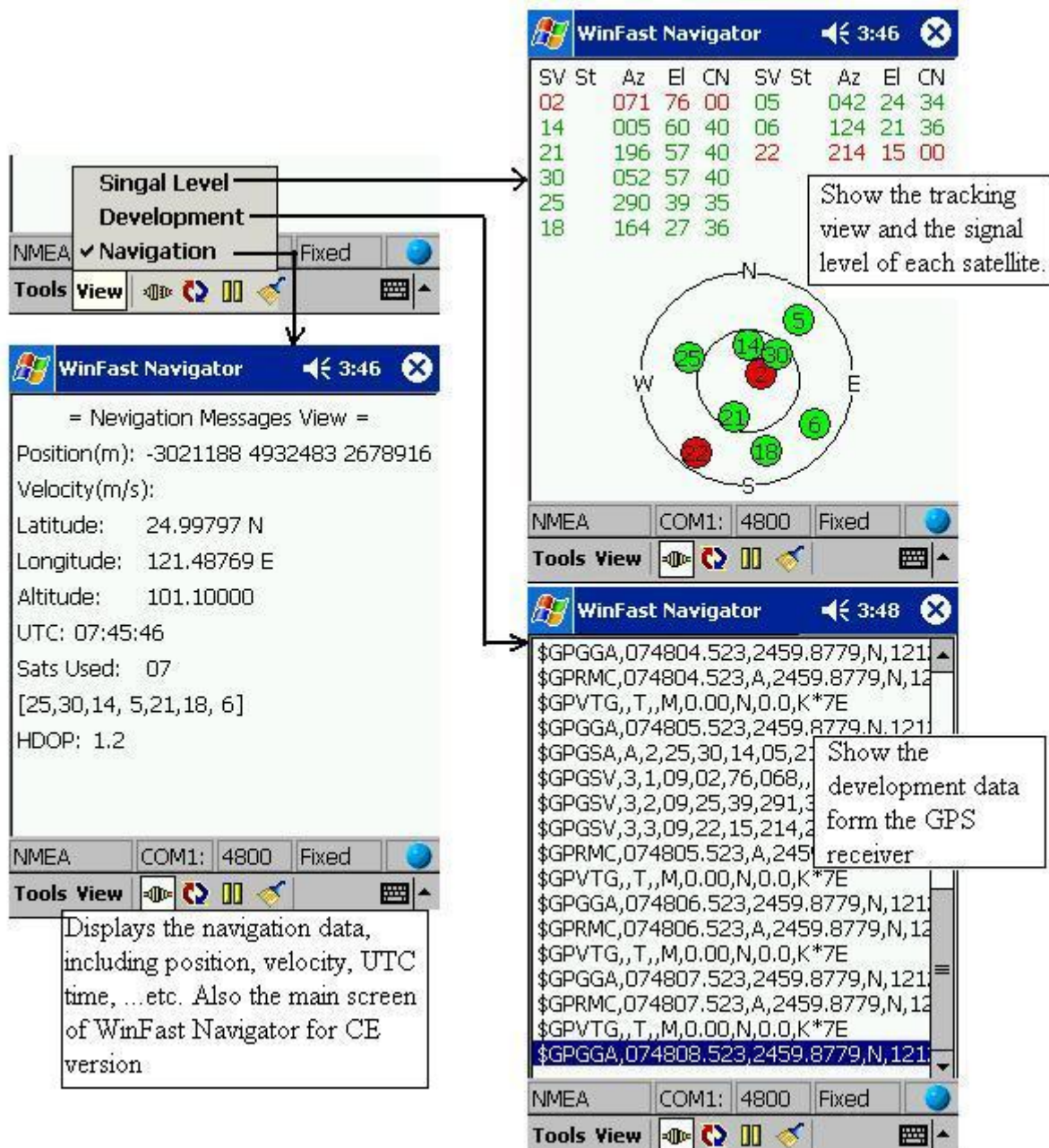
The ball-shaped icon is the data receiving indicator.

: The COM port is currently not receiving data.

: The COM port is receiving data.

Navigation Messages

On the menu bar click **View**. A menu with 3 options appears as shown in the figure below.



The figure shows three screenshots of the WinFast Navigator software interface, illustrating the 'View' menu options.

Top Screenshot: Singal Level
The 'Singal Level' menu is selected. It displays a table of satellite data:

SV	St	Az	El	CN	SV	St	Az	El	CN
02	071	76	00	05	042	24	34		
14	005	60	40	06	124	21	36		
21	196	57	40	22	214	15	00		
30	052	57	40						
25	290	39	35						
18	164	27	36						

A callout box points to the table: "Show the tracking view and the signal level of each satellite."

Middle Screenshot: Navigation Messages View
The 'Navigation Messages View' is selected. It displays the following data:

```

= Navigation Messages View =
Position(m): -3021188 4932483 2678916
Velocity(m/s):
Latitude: 24.99797 N
Longitude: 121.48769 E
Altitude: 101.10000
UTC: 07:45:46
Sats Used: 07
[25,30,14, 5,21,18, 6]
HDOP: 1.2
  
```

A callout box points to the data: "Displays the navigation data, including position, velocity, UTC time, ...etc. Also the main screen of WinFast Navigator for CE version"

Bottom Screenshot: Tracking View
The 'Tracking View' is selected. It displays a list of NMEA sentences:

```

$GPGGA,074804.523,2459.8779,N,121
$GPRMC,074804.523,A,2459.8779,N,12
$GPVTG,,T,,M,0.00,N,0.0,K*7E
$GPGGA,074805.523,2459.8779,N,121
$GPGSA,A,2,25,30,14,05,2
$GPGSV,3,1,09,02,76,068,,
$GPGSV,3,2,09,25,39,291,3
$GPGSV,3,3,09,22,15,214,2
$GPRMC,074805.523,A,245
$GPVTG,,T,,M,0.00,N,0.0,K*7E
$GPGGA,074806.523,2459.8779,N,121
$GPRMC,074806.523,A,2459.8779,N,12
$GPVTG,,T,,M,0.00,N,0.0,K*7E
$GPGGA,074807.523,2459.8779,N,121
$GPRMC,074807.523,A,2459.8779,N,12
$GPVTG,,T,,M,0.00,N,0.0,K*7E
$GPGGA,074808.523,2459.8779,N,121
  
```

A callout box points to the list: "Show the development data form the GPS receiver"

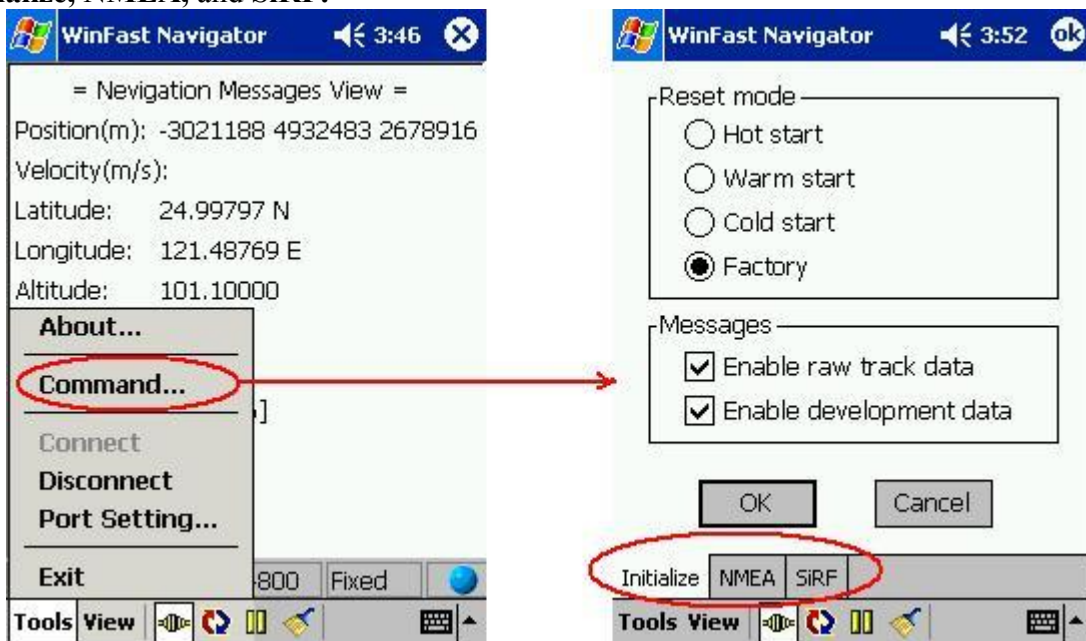
Configuration Tools

On the menu bar click **Tools**. A menu with the following options appears (see the figure on the left below):

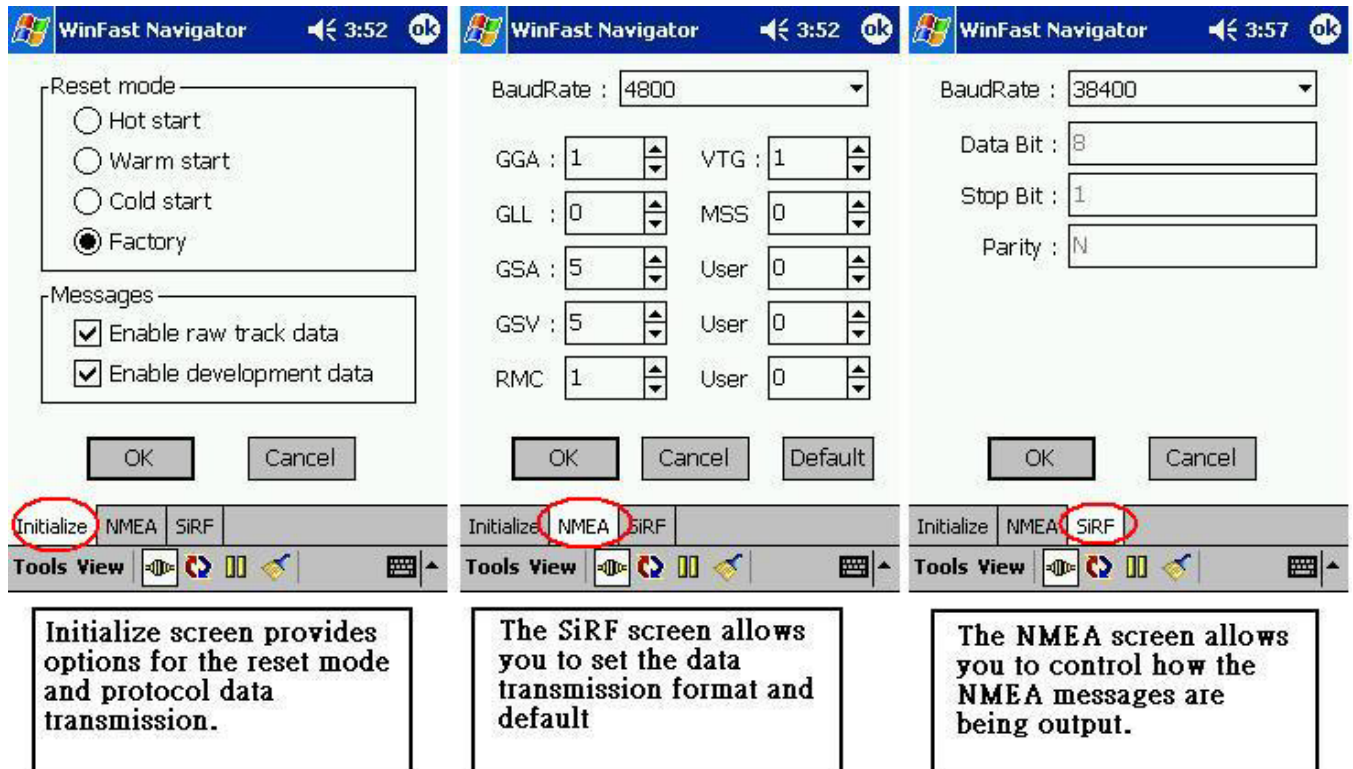
- About
- Command
- Connect
- Disconnect
- Port Setting
- Exit

Command

Select Command and an additional menu bar appears on the bottom of the data window that includes 3 tabs: **Initialize**, **NMEA**, and **SiRF**.

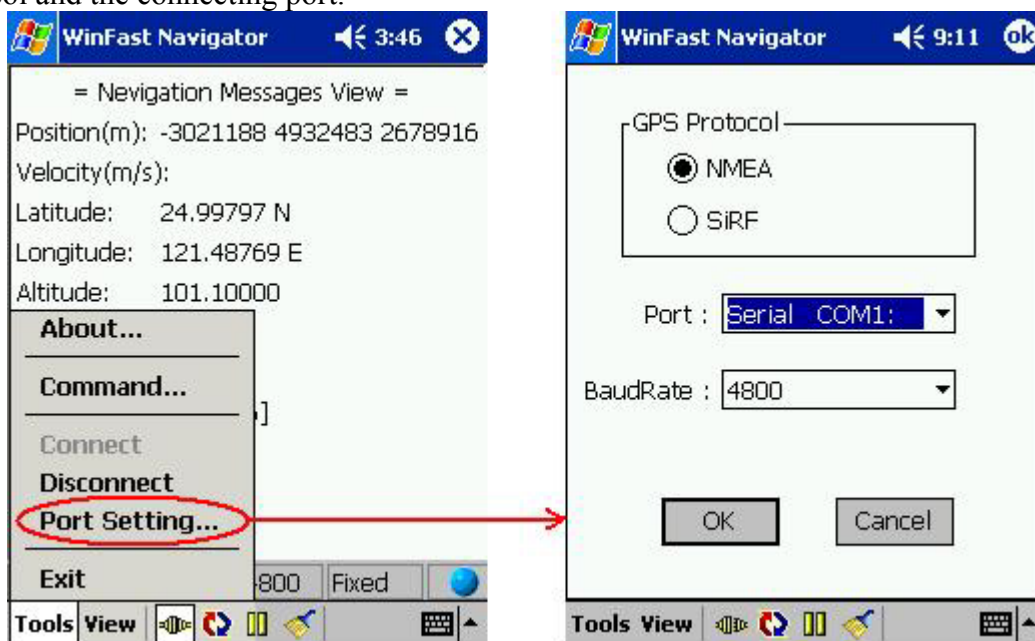


The **Initialize**, **NMEA**, and **SiRF** configuration screens under **Command** are as shown in the figures below:



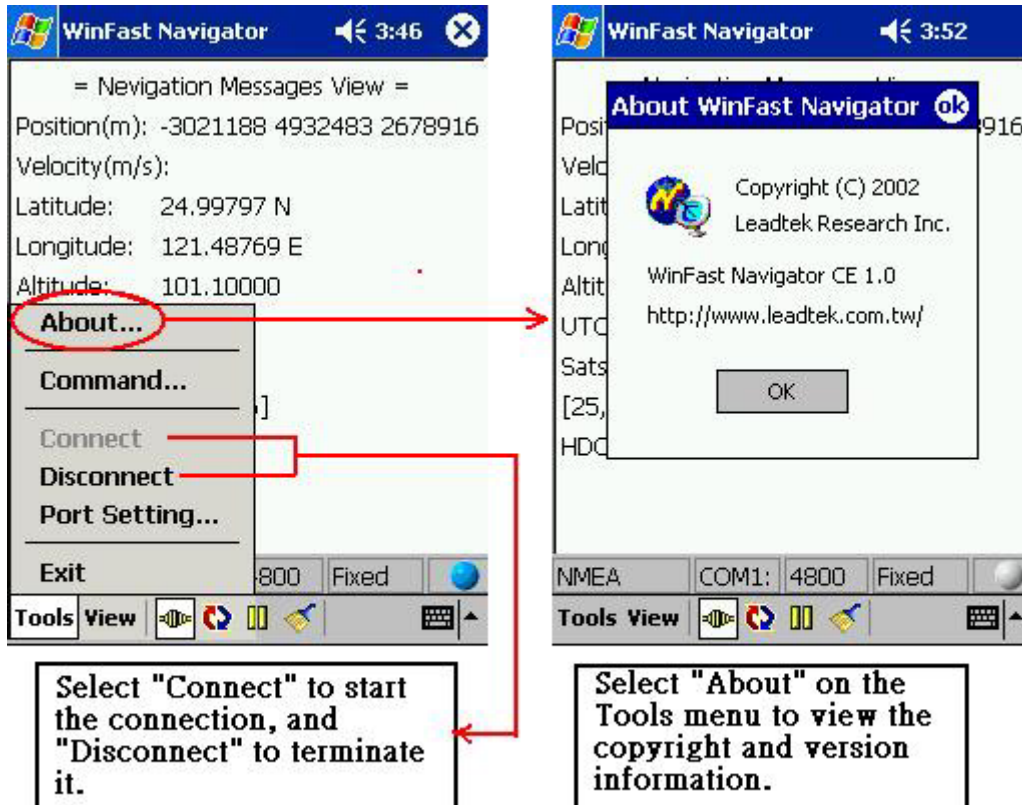
Port Setting

Select “**Port Setting**” from the **Tools** menu and the Port Setting screen appears. It allows you to set the GPS protocol and the connecting port.



<Note>When you use GPS receiver which is smart antenna 9531 and 9532, or CF 9534, or Bluetooth 9537 of Leadtek's GPS products to connect this software, you have to choose valid port and make this software well work.

Connect, Disconnect & About



Quick Buttons on Menu Bar



Connect

Press to build connection with the GPS module.

: The GPS is not connected.

: The GPS is connected.

Automatically detect communication protocol

When this button is pressed, the system will automatically detect the GPS Protocol and Baud Rate of the port currently enabled.

Pause

Press to pause the data displayed in Development View.

Clear

Press to clear the data in Development View.